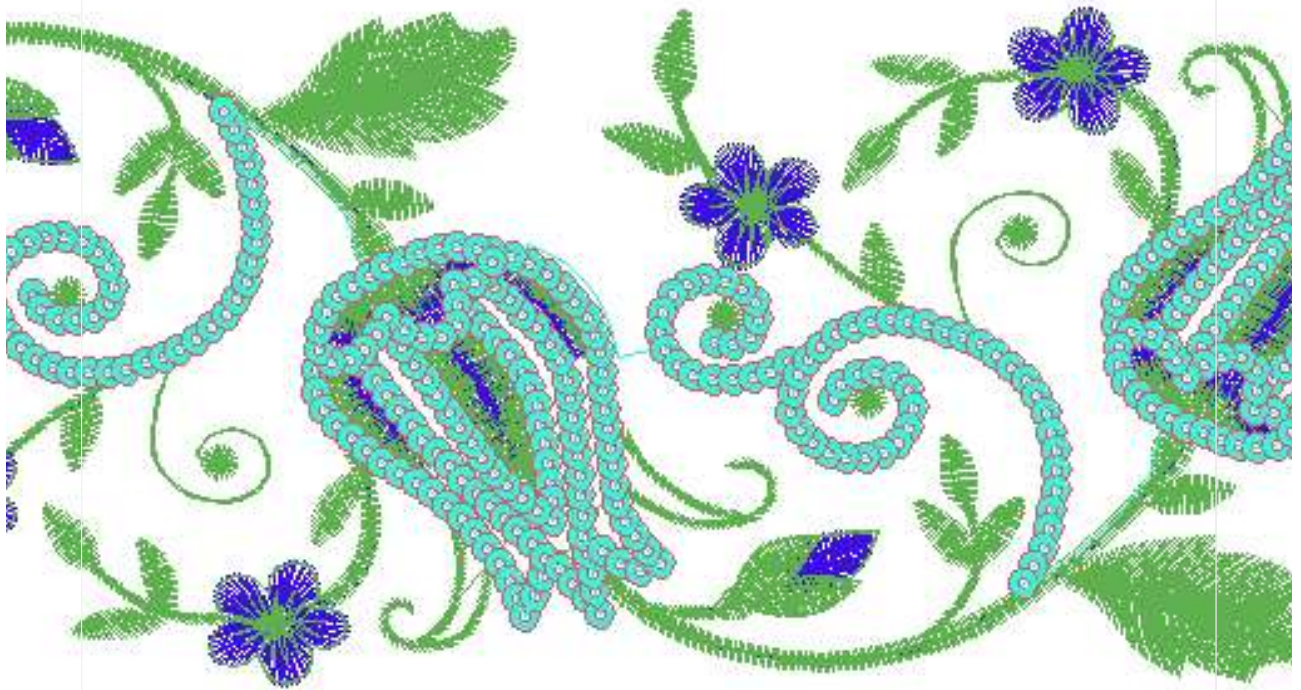




- #1 N1
- #2 S
- #3 N2
- #4 N3
- #4.PA ○○












Ölçek : 100 %
Boyut : 424,3 x 116,6 mm
Vuruş : 26162

		
<p>#2 Fonksiyon:S İğne:1</p>	<p>#3 Fonksiyon:N2 İğne:2</p>	<p>#4.PA Fonksiyon:PA İğne:3</p>

#2  S, İğne:1, Renk:Ackermann 3110
#3  N2, İğne:2, Renk:Ackermann 5531
#4.PA    PA, İğne:3, Renk:Ackermann 4430 / std-1 4,0 x 4,0



Desen no :696.01
Desen Adı :
Müşteri :
Vuruş :26162
Adım boyu :40
Boyut :424,3 x 116,6 mm
İğne :3
Stop :1
Çalışma sırası :1-s-2-3
Açıklamalar :

Vuruş Dağılımı

Aralık	Vuruş	Dağılım (Yüzde)
0,0 - 2,0 mm	4516	
2,0 - 4,0 mm	12108	
4,0 - 6,0 mm	3687	
6,0 - 9,0 mm	1336	

İğneler_Uzunluklar

Detay No	Fonksiyon	Vuruş	Uzunluk (m)	Renk	İğne Bilgisi
1	Nakışa Başla	3553	27,5		Ackermann 3110
2	İğne 2	14570	69,1		
3	İğne 3	3567	9,5		
4	Toplam uzunluk		106,1		
5	Alt iplik		31,5		

Pul Sayıları

	A
3	760