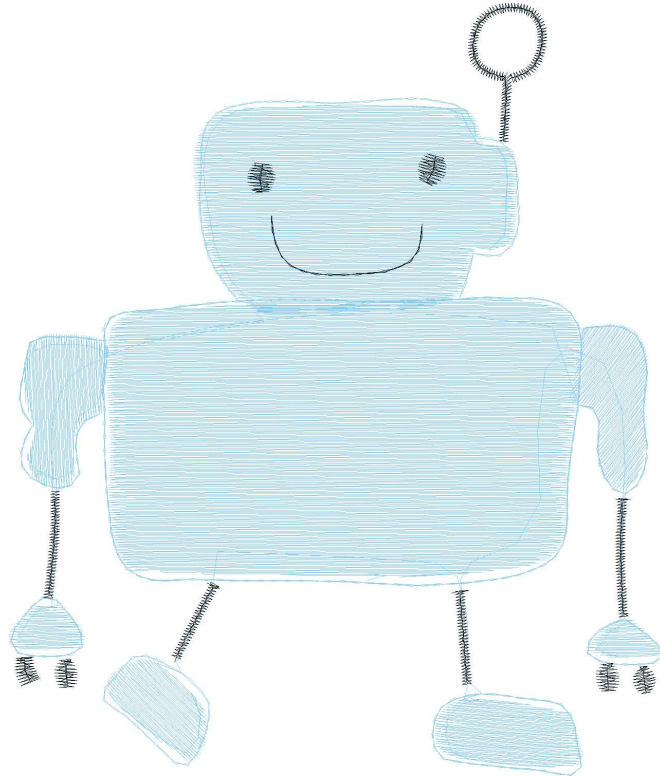
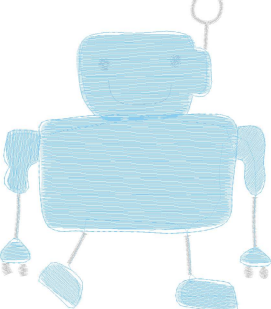
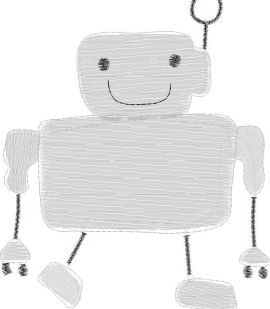






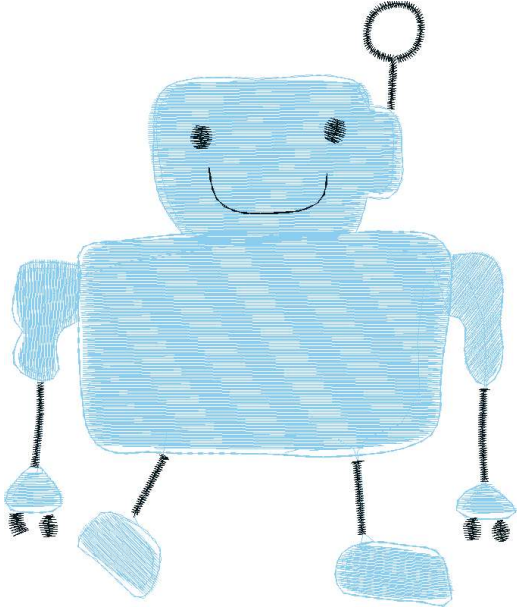
#1 N1
#2



Ölçek : 100 %
Boyut : 86,8 x 102,1 mm
Vuruş : 8539

	
#1 Fonksiyon:N1 İğne:1	#2 Fonksiyon:N2 İğne:2

#1  N1, İğne:1, Renk:Ackermann 3110
#2  N2, İğne:2, Renk:Ackermann 5531



Desen no :937.01
Desen Adı :
Müşteri :
Vuruş :8539
Adım boyu :40
Boyut :86,8 x 102,1 mm
İğne :2
Stop :0
Çalışma sırası :1-2
Açıklamalar :

Vuruş Dağılımı

Aralık	Vuruş	Dağılım (Yüzde)
0,0 - 2,0 mm	2082	
2,0 - 4,0 mm	5820	
4,0 - 6,0 mm	297	
6,0 - 9,0 mm	18	

İğneler_Uzunluklar

Detay No	Fonksiyon	Vuruş	Uzunluk (m)	Renk	İğne Bilgisi
1	Nakışa Başla	7289	26,6		
2	İğne 2	942	2,7		
3	Toplam uzunluk		29,4		
4	Alt iplik		24,7		