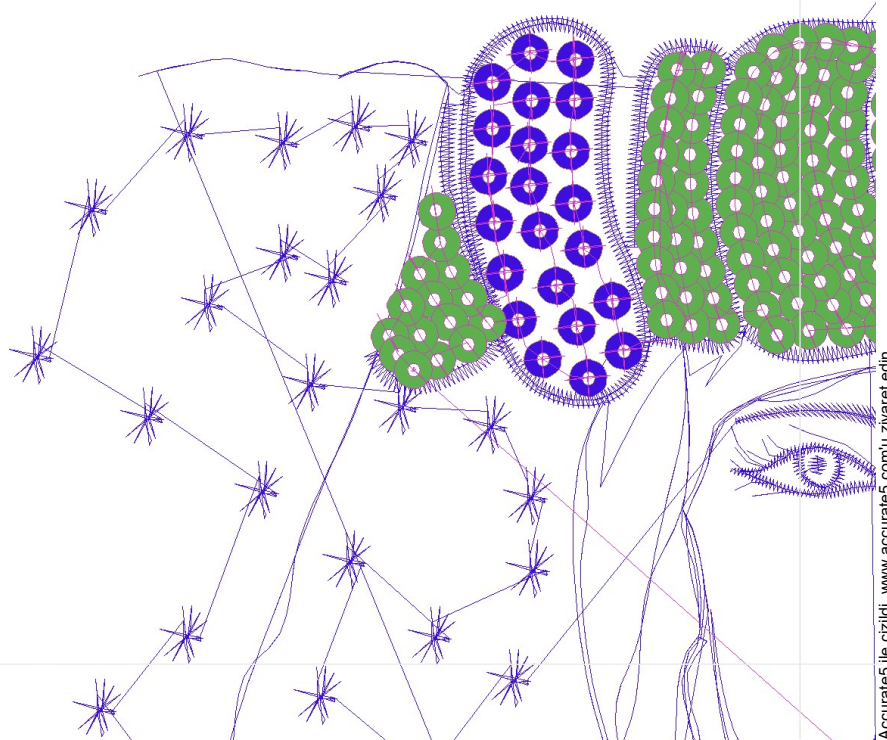
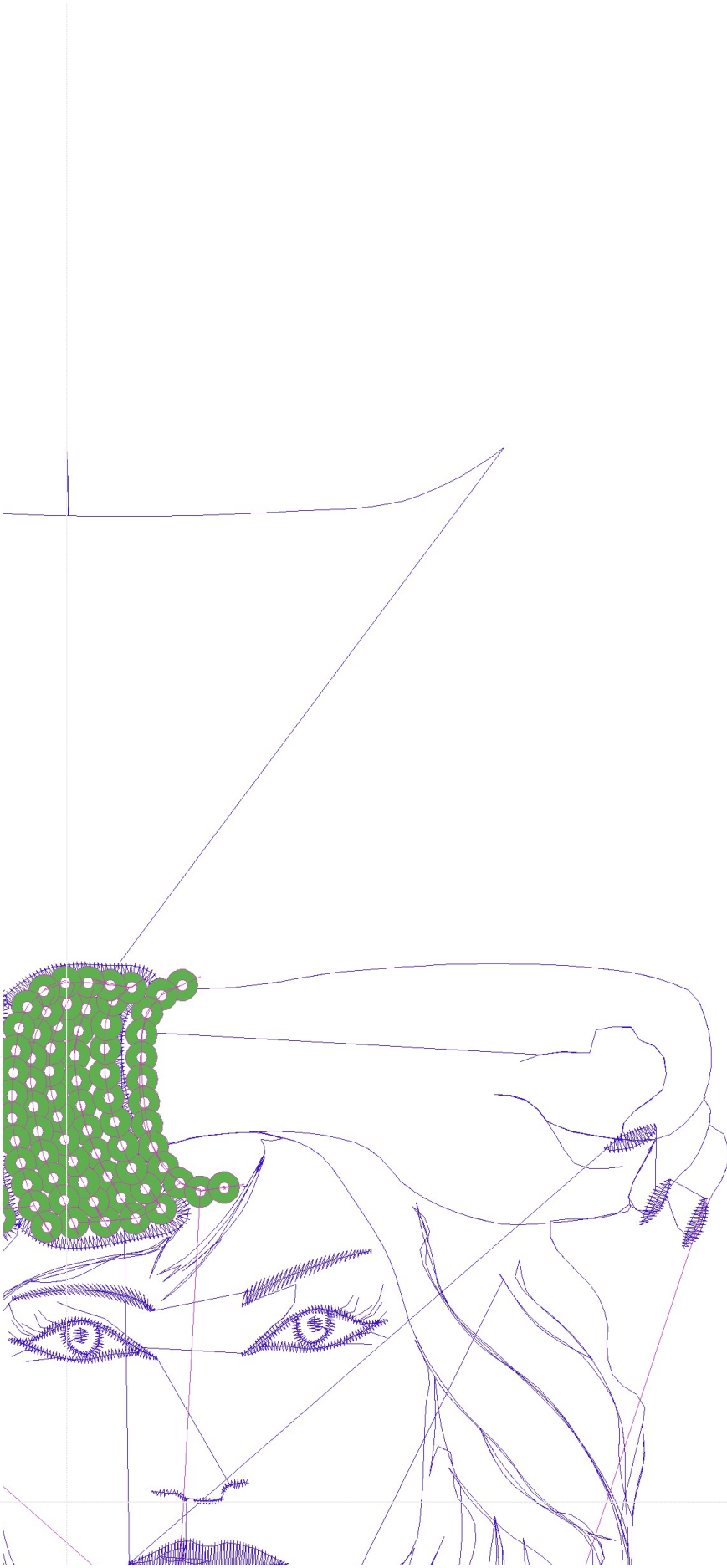




- #1 N1
- #2 S
- #3 S
- #4 N2
- #4.PA ○○












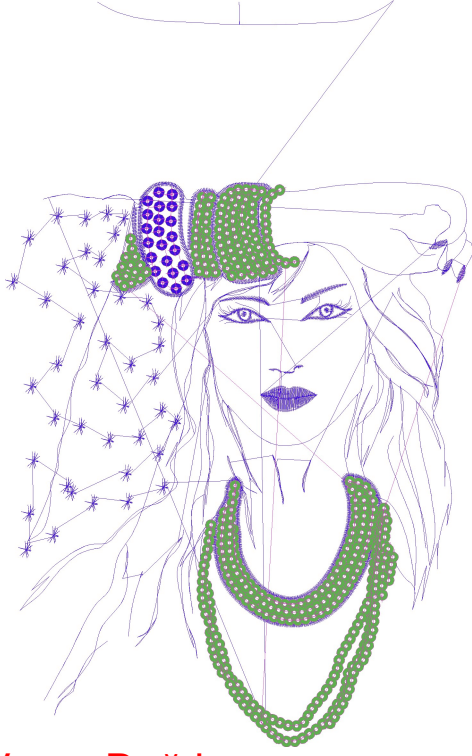


Desen no : 9202.01
Desen Adı : 689mod.5MM
Müşteri : ADNAN

Ölçek : 100 %
Boyut : 209,2 x 334,7 mm
Vuruş : 17278

		
#2 Fonksiyon:S İğne:1	#3 Fonksiyon:S İğne:1	#4.PA Fonksiyon:PA İğne:2

#2  S, İğne:1, Renk:Ackermann 3110
#3  S, İğne:1, Renk:Ackermann 3110
#4.PA    PA, İğne:2, Renk:Ackermann 5531 / std-2 5,0 x 5,0



Desen no :9202.01
Desen Adı :689mod.5MM
Müşteri :
Vuruş :17278
Adım boyu :127
Boyut :209,2 x 334,7 mm
İğne :2
Stop :2
Çalışma sırası :1-s-s-2
Açıklamalar :

Vuruş Dağılımı

Aralık	Vuruş	Dağılım (Yüzde)
0,0 - 2,0 mm	1893	
2,0 - 4,0 mm	13835	
4,0 - 6,0 mm	546	
6,0 - 9,0 mm	424	

İğneler_Uzunluklar

Detay No	Fonksiyon	Vuruş	Uzunluk (m)	Renk	İğne Bilgisi
1	Nakışa Başla	14980	48,6		Ackermann 3110
2	İğne 2	1774	6,7		Ackermann 5531
3	Toplam uzunluk		55,4		
4	Alt iplik		39,0		

Pul Sayıları

	A
2	393