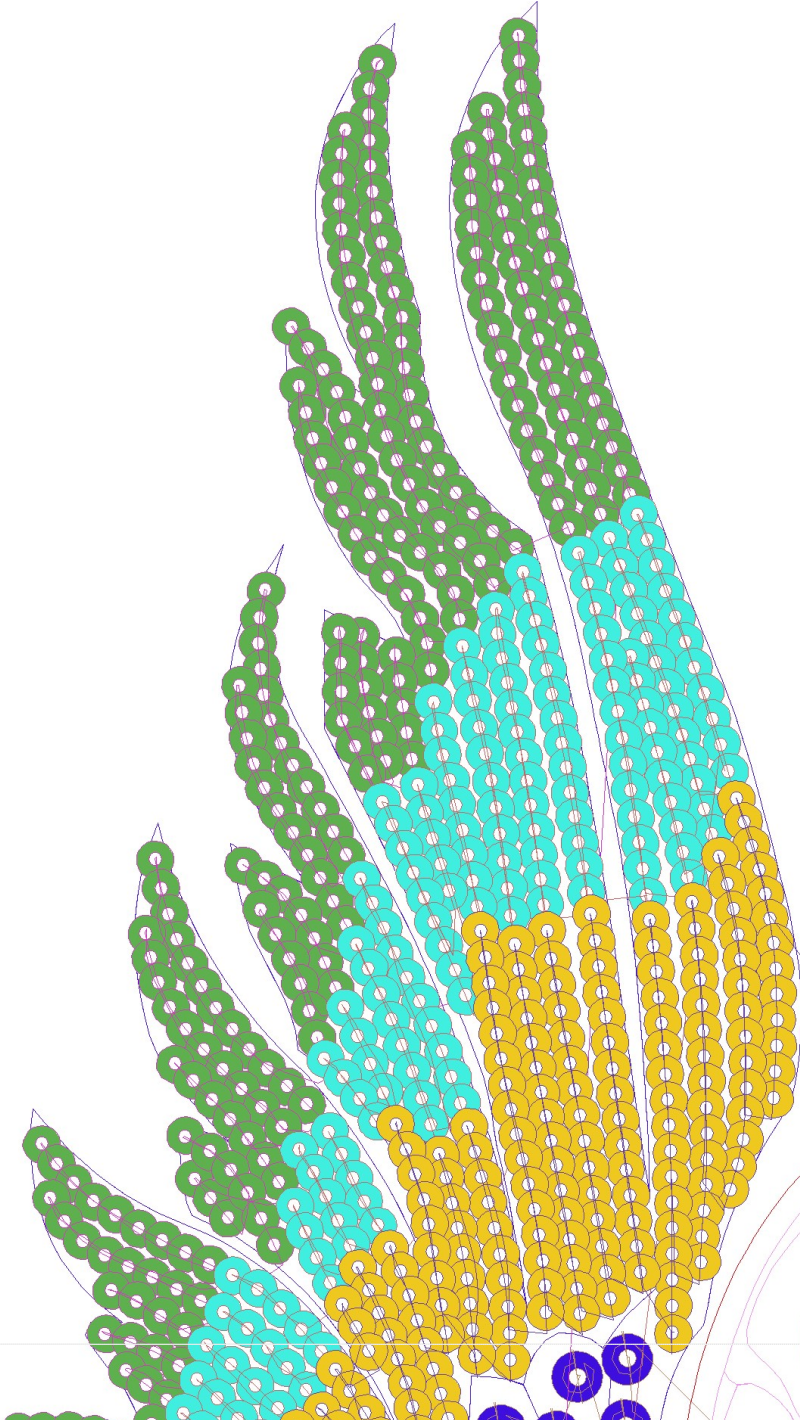
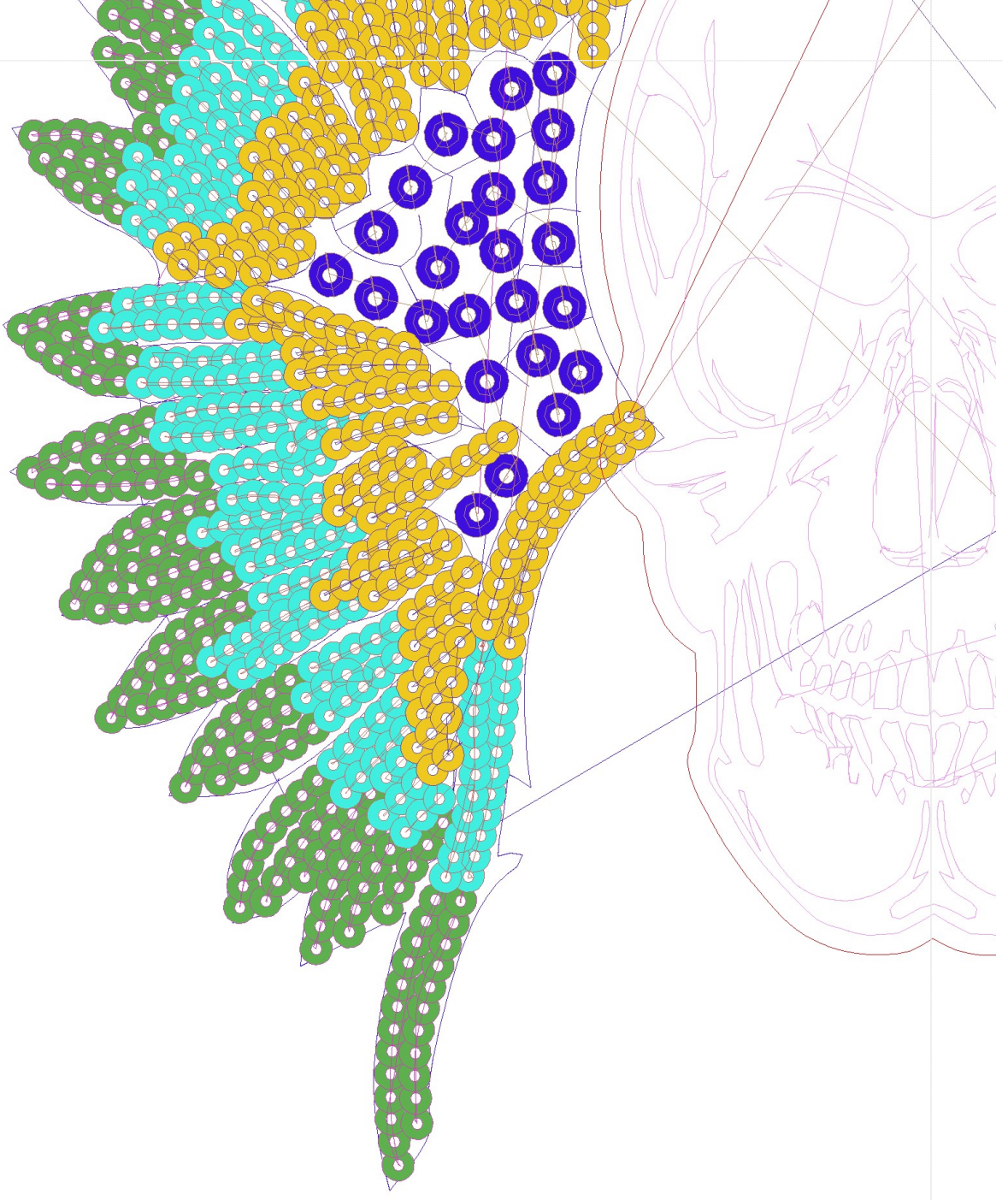


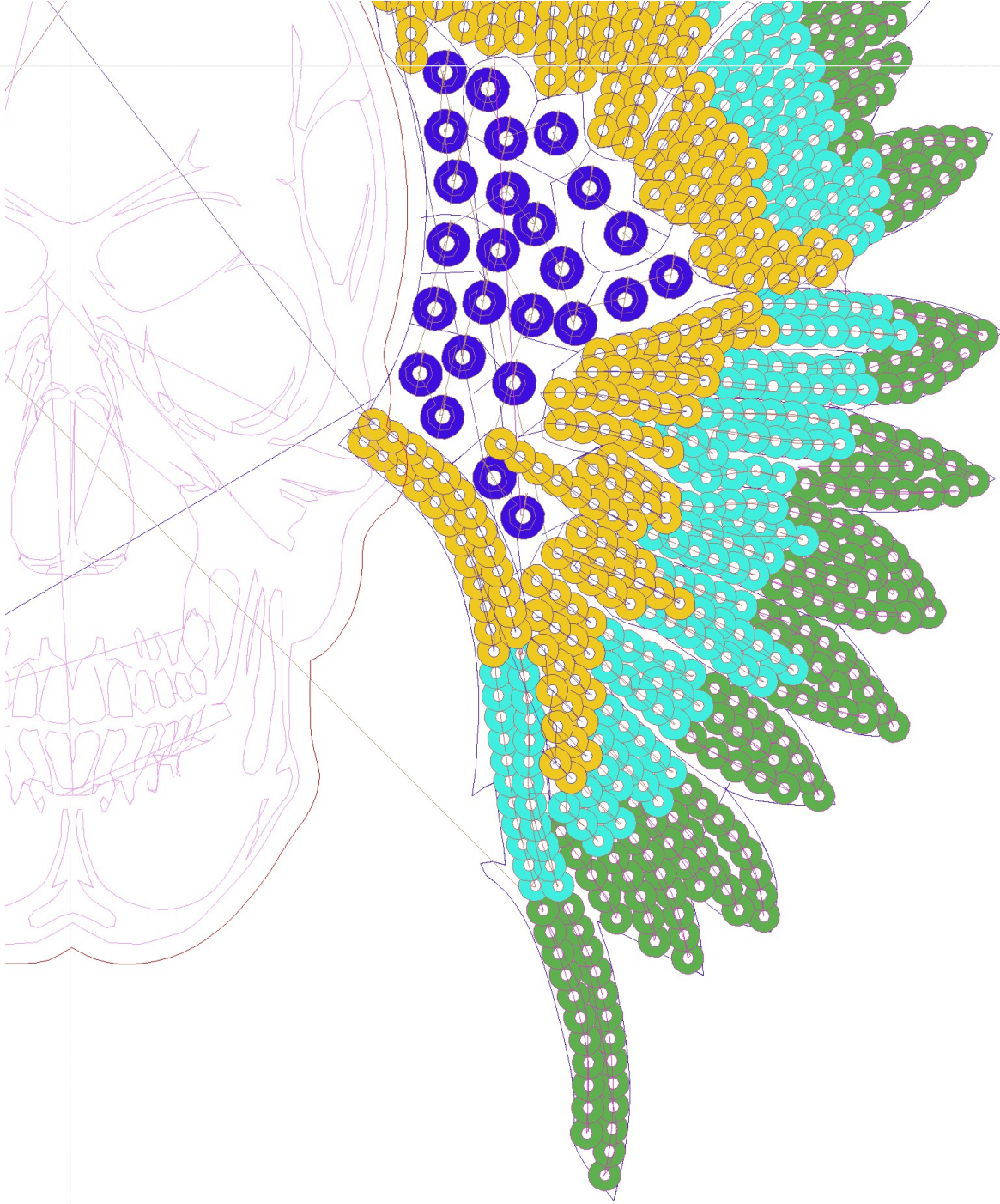


- #1 N1
- #2 S
- #3 N2
- #3.PA ○○
- #4 N3
- #4.PA ○○
- #5 N4
- #5.PA ○○
- #6 N5
- #7 S
- #8 N6









Desen no : 3297.01
Desen Adı : Desen9
Müşteri :

Ölçek : 100 %
Boyut : 287,0 x 354,9 mm
Vuruş : 29403

#2 Fonksiyon:S İğne:1	#3.PA Fonksiyon:PA İğne:2	#4.PA Fonksiyon:PA İğne:3
#5.PA Fonksiyon:PA İğne:4	#7 Fonksiyon:S İğne:5	#8 Fonksiyon:N6 İğne:6

- | | | | | |
|-------|--|-----|---------|---------------------------------------|
| #2 | | S, | İğne:1, | Renk:Ackermann 3110 |
| #3.PA | | PA, | İğne:2, | Renk:Ackermann 5531 / std-2 5,0 x 5,0 |
| #4.PA | | PA, | İğne:3, | Renk:Ackermann 4430 / std-2 5,0 x 5,0 |
| #5.PA | | PA, | İğne:4, | Renk:Ackermann 0851 / std-2 5,0 x 5,0 |
| #7 | | S, | İğne:5, | Renk:Ackermann 1913 |
| #8 | | N6, | İğne:6, | Renk:Ackermann 3045 |



Desen no :3297.01
Desen Adı :Desen9
Müşteri :
Vuruş :29403
Adım boyu :40
Boyut :287,0 x 354,9 mm
İğne :6
Stop :2
Çalışma sırası :1-s-2-3-4-5-s-6
Açıklamalar :

Vuruş Dağılımı

Aralık	Vuruş	Dağılım (Yüzde)
0,0 - 2,0 mm	5395	
2,0 - 4,0 mm	19993	
4,0 - 6,0 mm	589	
6,0 - 9,0 mm	86	

İğneler_Uzunluklar

Detay No	Fonksiyon	Vuruş	Uzunluk (m)	Renk	İğne Bilgisi
1	Nakışa Başla	7124	18,6		Ackermann 3110
2	İğne 2	5007	16,6		Ackermann 5531
3	İğne 3	3599	11,7		Ackermann 4430
4	İğne 4	3513	11,0		Ackermann 0851
5	İğne 5	241	0,6		Ackermann 1913
6	İğne 6	6662	13,7		Ackermann 3045
7	Toplam uzunluk		72,2		
8	Alt iplik		65,3		

Pul Sayıları

	A
2	860
3	650
4	622
Toplam	2.132

2.132