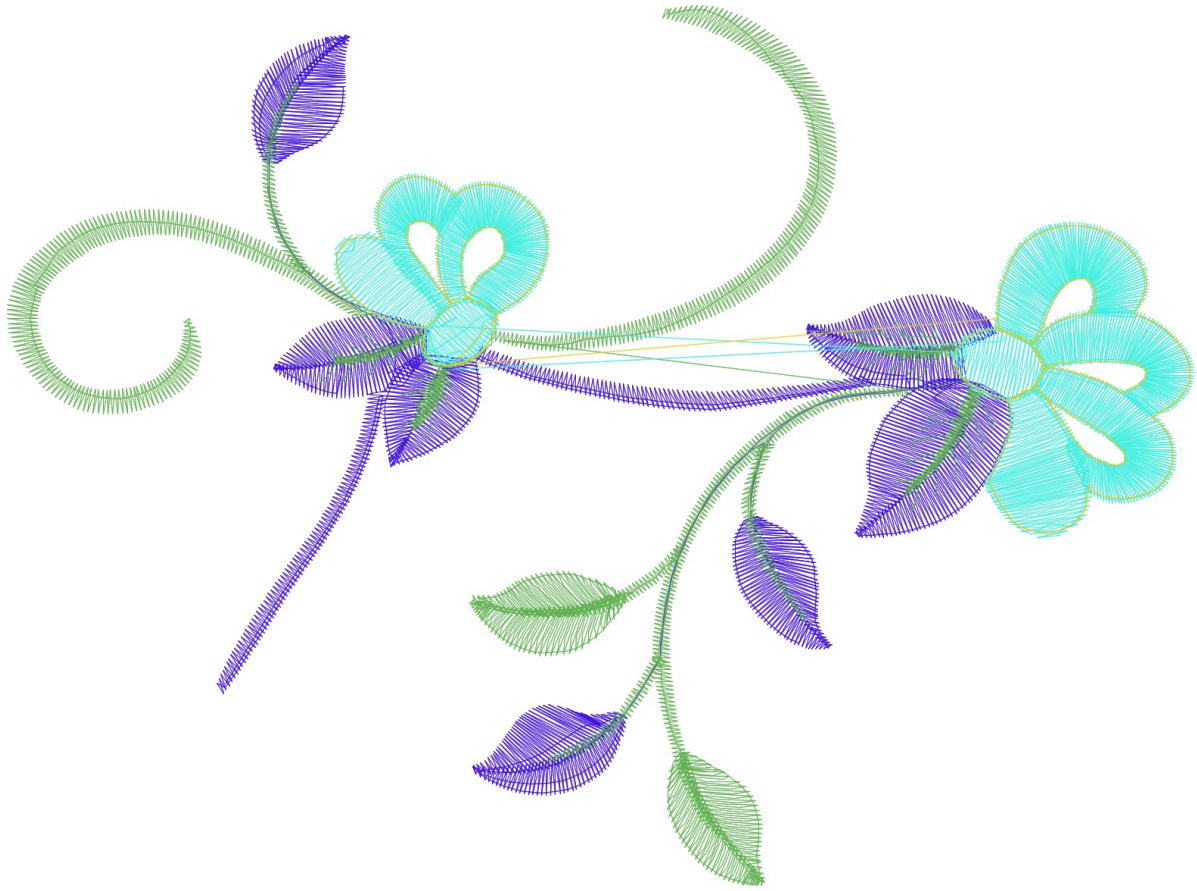





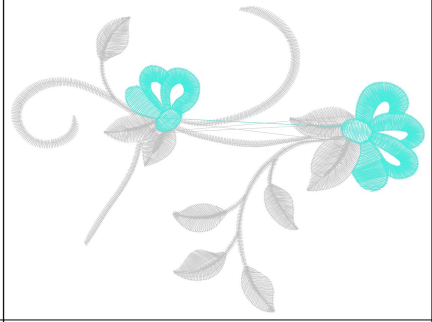


3.02.2023





#1	N1
#2	S
#3	S
#4	S
#5	S



Desen no :
Desen Adı : G002.DST
M şteri :  mer

 l ek : 61 %
Boyut : 259,2 x 192,0 mm
Vuruş : 9692

		
<p>#2 Fonksiyon:S İğne:1</p>	<p>#3 Fonksiyon:S İğne:1</p>	<p>#4 Fonksiyon:S İğne:1</p>
		
<p>#5 Fonksiyon:S İğne:1</p>		

#2  S, İğne:1, Renk:Ackermann 3110
#3  S, İğne:1, Renk:Ackermann 5531
#4  S, İğne:1, Renk:Ackermann 4430
#5  S, İğne:1, Renk:Ackermann 0851



Desen no :
Desen Adı :G002.DST
Müşteri :
Vuruş :9692
Adım boyu :127
Boyut :259,2 x 192,0 mm
İğne :1
Stop :4
Çalışma sırası :1-s-s-s-s
Açıklamalar :

Vuruş Dağılımı

Aralık	Vuruş	Dağılım (Yüzde)
0,0 - 2,0 mm	1372	
2,0 - 4,0 mm	4631	
4,0 - 6,0 mm	2063	
6,0 - 9,0 mm	1684	

İğneler_Uzunluklar

Detay No	Fonksiyon	Vuruş	Uzunluk (m)	Renk	İğne Bilgisi
1	Nakışa Başla	9852	40,8		Ackermann 3110
2	Toplam uzunluk		40,8		
3	Alt iplik		36,9		