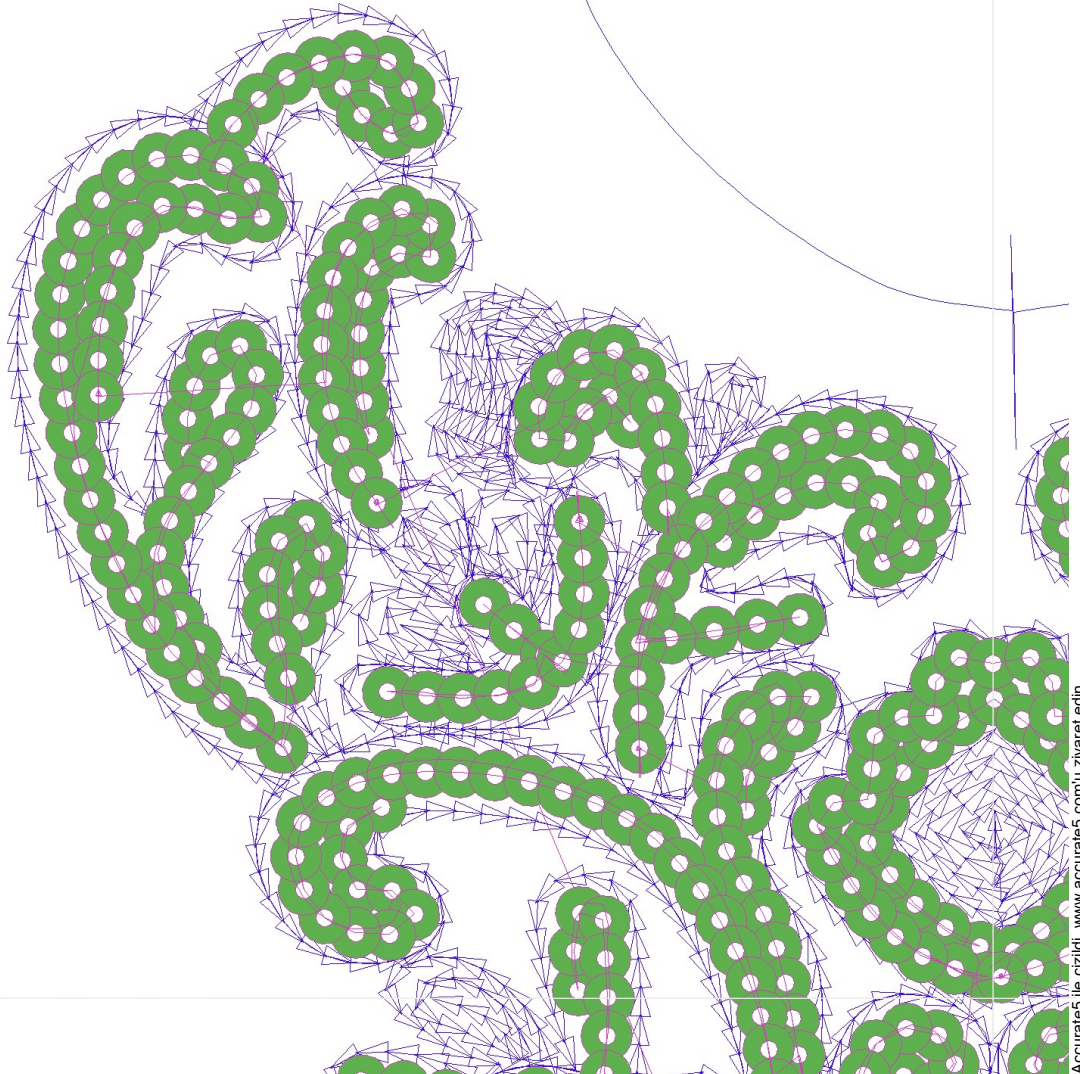
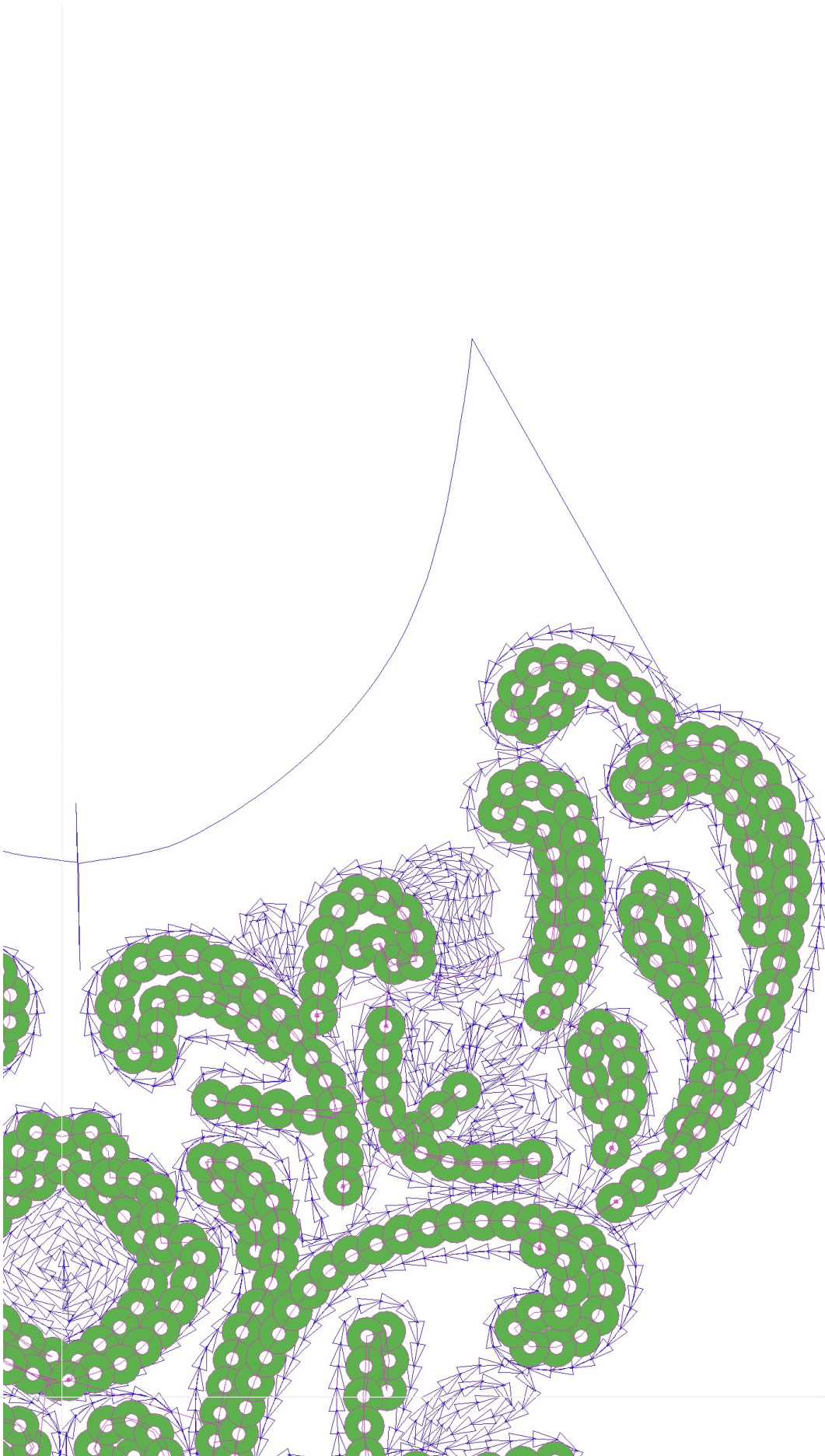
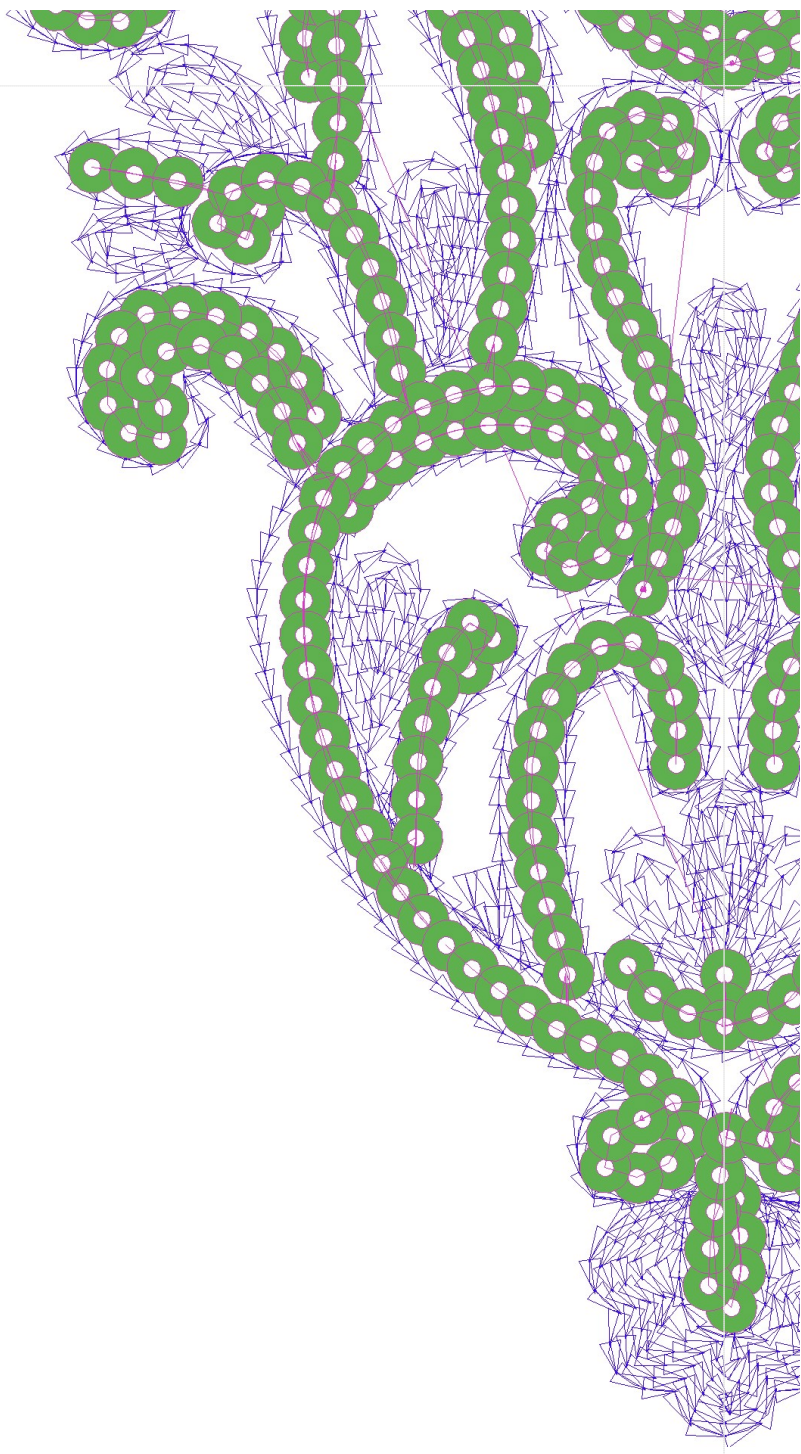


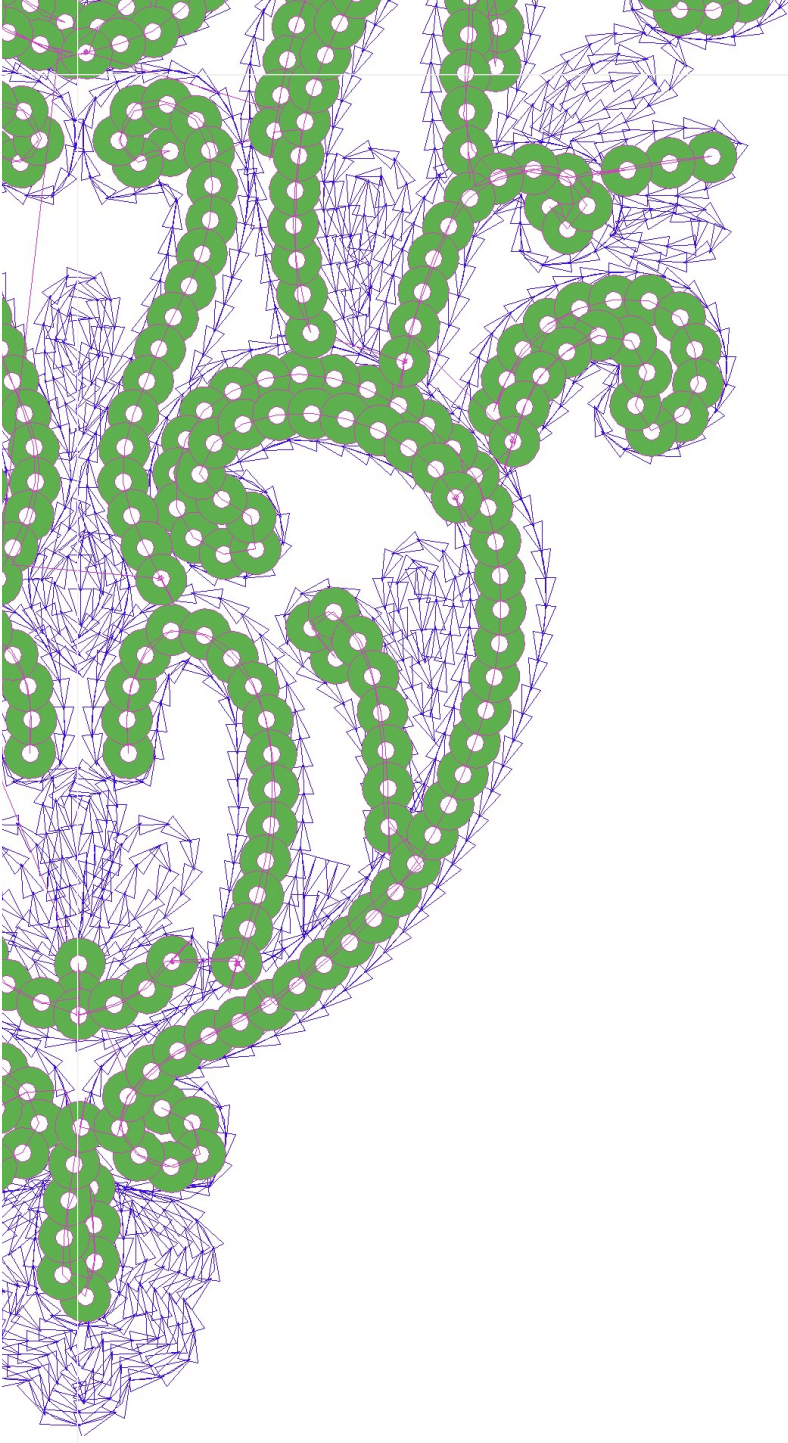


- #1 N1
- #2 S
- #3 N2
- #3.PA ○○



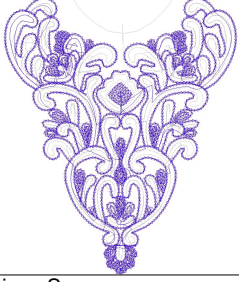
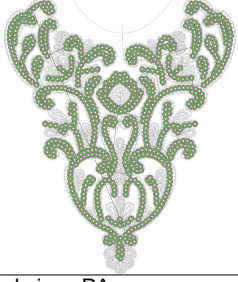


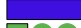




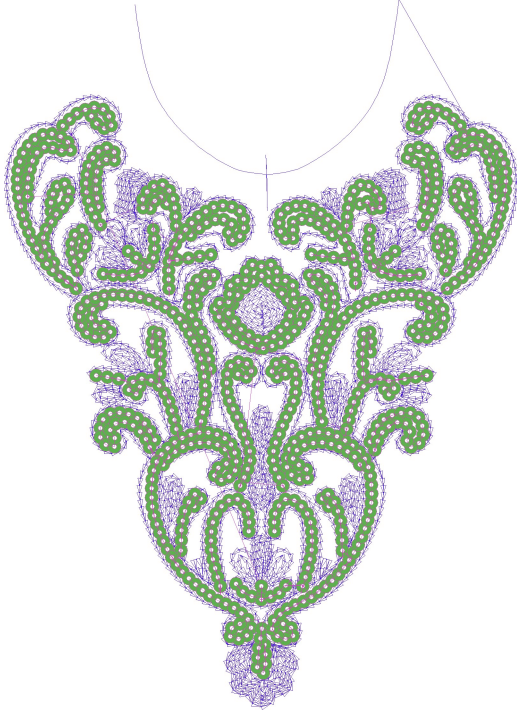


Desen no : 4832.01
Desen Adı : Desen1
Müşteri : FİN TEKSTİL

Ölçek : 100 %
Boyut : 260,6 x 360,0 mm
Vuruş : 23814

	
#2 Fonksiyon:S İğne:1	#3.PA Fonksiyon:PA İğne:2

#2  S, İğne:1, Renk:Ackermann 3110
#3.PA   PA, İğne:2, Renk:Ackermann 5531 / std-3 6,8 x 6,8



Desen no :4832.01
Desen Adı :Desen1
Müşteri :
Vuruş :23814
Adım boyu :127
Boyut :260,6 x 360,0 mm
İğne :2
Stop :1
Çalışma sırası :1-s-2
Açıklamalar :

Vuruş Dağılımı

Aralık	Vuruş	Dağılım (Yüzde)
0,0 - 2,0 mm	2272	
2,0 - 4,0 mm	8786	
4,0 - 6,0 mm	11915	
6,0 - 9,0 mm	29	

İğneler_Uzunluklar

Detay No	Fonksiyon	Vuruş	Uzunluk (m)	Renk	İğne Bilgisi
1	Nakışa Başla	19600	67,9		Ackermann 3110
2	İğne 2	3419	14,7		
3	Toplam uzunluk		82,6		
4	Alt iplik		74,7		

Pul Sayıları

	A
2	759