

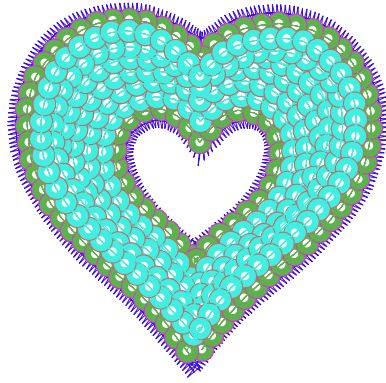

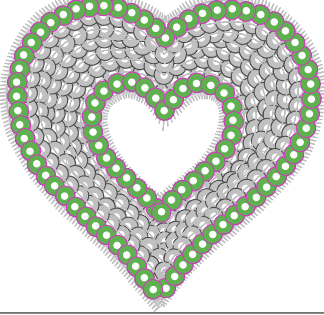
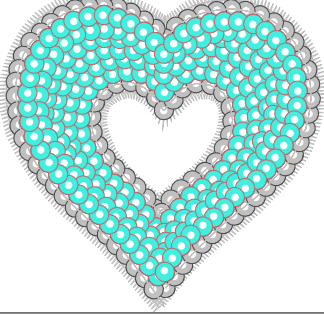







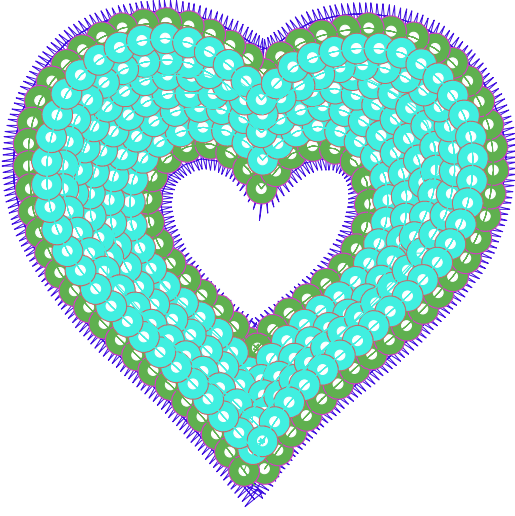
8.12.2022

#1 N1
#2 N2
#2.PA 
#3 N3
#3.PA 



| | | |
|---|---|---|
|  |  |  |
| #1 Fonksiyon:N1 İğne:1 | #2.PA Fonksiyon:PA İğne:2 | #3.PA Fonksiyon:PA İğne:3 |

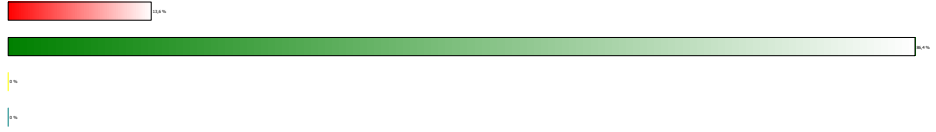
#1  N1, İğne:1, Renk:Ackermann 3110
#2.PA  PA, İğne:2, Renk:Ackermann 5531 / std-0 3,0 x 3,0
#3.PA  PA, İğne:3, Renk:Ackermann 4430 / std-0 3,0 x 3,0



Desen no :24916.03
Desen Adı :3MM
Müşteri :
Vuruş :2383
Adım boyu :40
Boyut :50,3 x 49,5 mm
İğne :3
Stop :0
Çalışma sırası :1-2-3
Açıklamalar :

Vuruş Dağılımı

| Aralık | Vuruş | Dağılım (Yüzde) |
|--------------|-------|-----------------|
| 0,0 - 2,0 mm | 280 | |
| 2,0 - 4,0 mm | 1776 | |
| 4,0 - 6,0 mm | 0 | |
| 6,0 - 9,0 mm | 0 | |



İğneler_Uzunluklar

| Detay No | Fonksiyon | Vuruş | Uzunluk (m) | Renk | İğne Bilgisi |
|----------|----------------|-------|-------------|------|----------------|
| 1 | Nakışa Başla | 987 | 3,6 | | Ackermann 3110 |
| 2 | İğne 2 | 302 | 0,7 | | Ackermann 5531 |
| 3 | İğne 3 | 769 | 1,8 | | Ackermann 4430 |
| 4 | Toplam uzunluk | | 6,0 | | |
| 5 | Alt iplik | | 2,9 | | |

Pul Sayıları

| | A |
|--------|-----|
| 2 | 95 |
| 3 | 228 |
| Toplam | 323 |

323