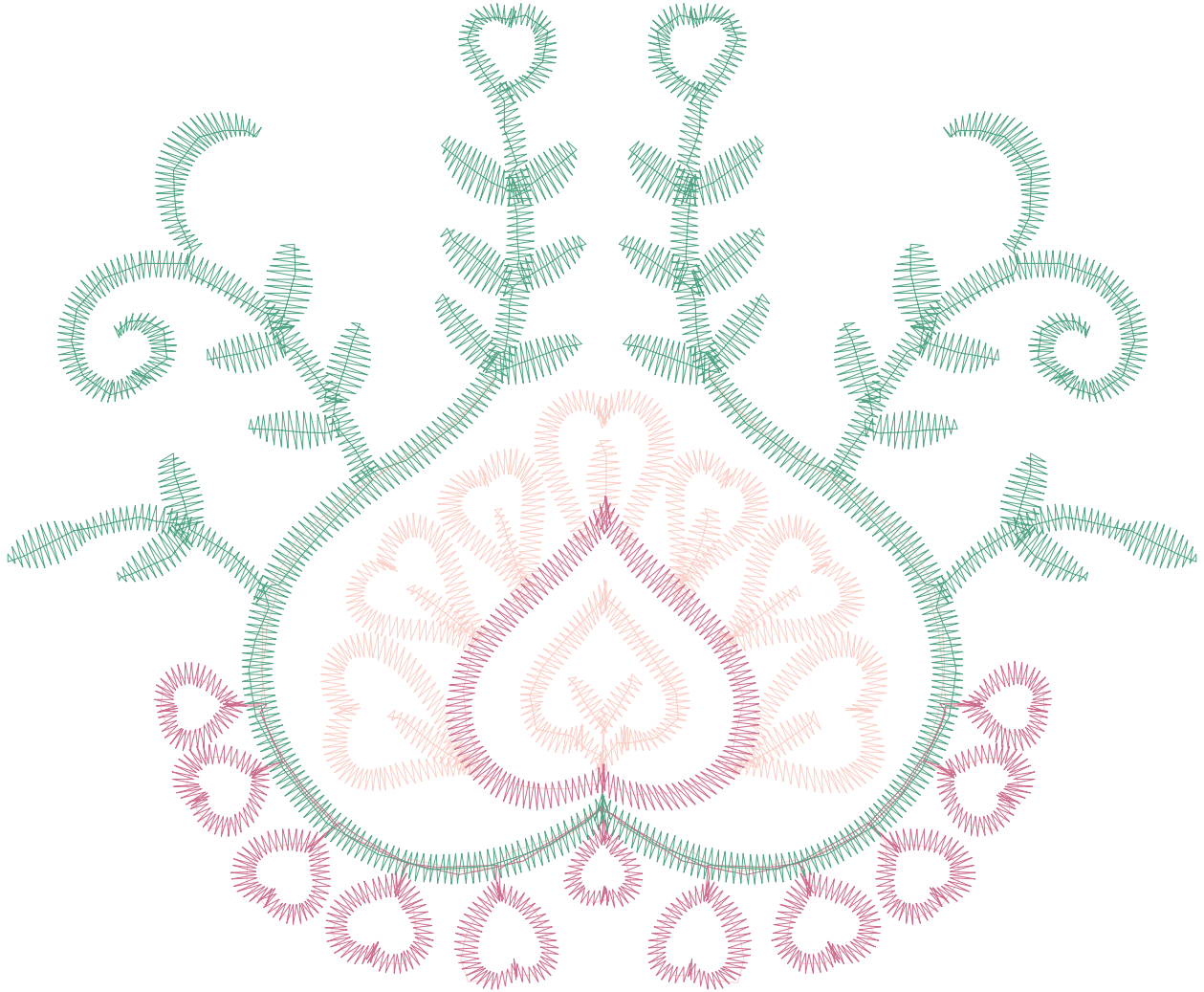




3.01.2023

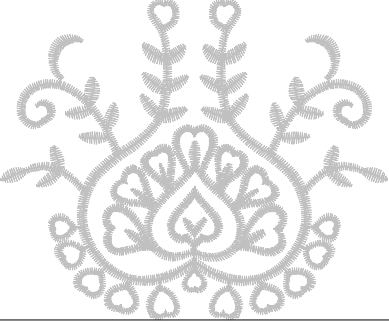
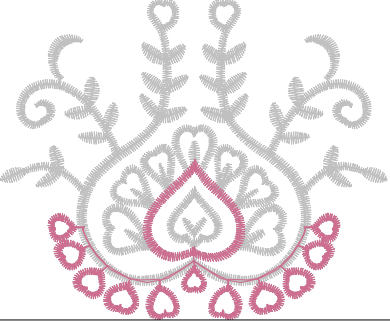
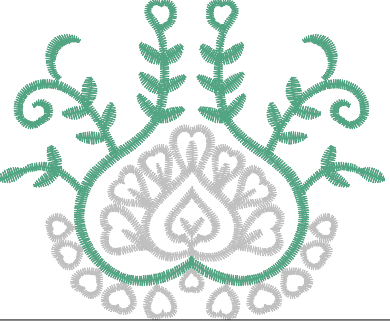
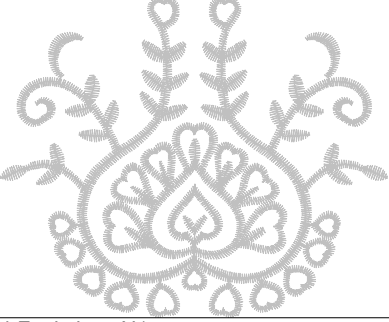
#1	N1
#2	N2
#3	N3
#4	N1



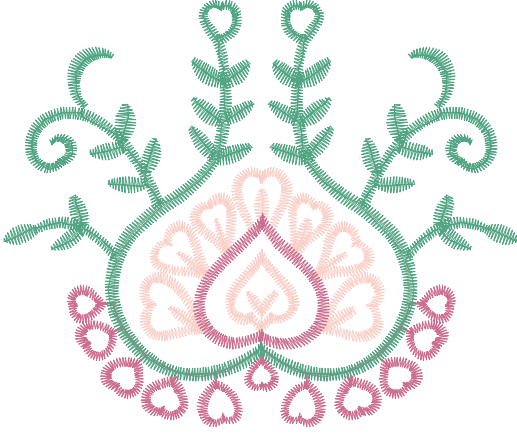
Accurate5 ile g zildi. www.accurate5.com'u ziyaret edin

Desen no : 880.01  
Desen Adı : Kalpler  
Müşteri :

Ölçek : 147 %  
Boyut : 112,0 x 92,9 mm  
Vuruş : 5493

		
<p>#1 Fonksiyon:N1 İğne:1</p>	<p>#2 Fonksiyon:N2 İğne:2</p>	<p>#3 Fonksiyon:N3 İğne:3</p>
		
<p>#4 Fonksiyon:N1 İğne:1</p>		

#1	N1,	İğne:1,	Renk:Ackermann 3110
#2	N2,	İğne:2,	Renk:Ackermann 5531
#3	N3,	İğne:3,	Renk:Ackermann 4430
#4	N1,	İğne:1,	Renk:Ackermann 3110



Desen no :880.01  
Desen Adı :Kalpler  
Müşteri :  
Vuruş :5493  
Adım boyu :127  
Boyut :112,0 x 92,9 mm  
İğne :3  
Stop :0  
Çalışma sırası :1-2-3-1  
Açıklamalar :

## Vuruş Dağılımı

Aralık	Vuruş	Dağılım (Yüzde)
0,0 - 2,0 mm	1618	
2,0 - 4,0 mm	3828	
4,0 - 6,0 mm	51	
6,0 - 9,0 mm	0	

## İğneler\_Uzunluklar

Detay No	Fonksiyon	Vuruş	Uzunluk (m)	Renk	İğne Bilgisi
1	Nakışa Başla	1655	3,6		
2	İğne 2	1350	2,9		
3	İğne 3	2492	6,8		
4	Toplam uzunluk		13,3		
5	Alt iplik		12,1		