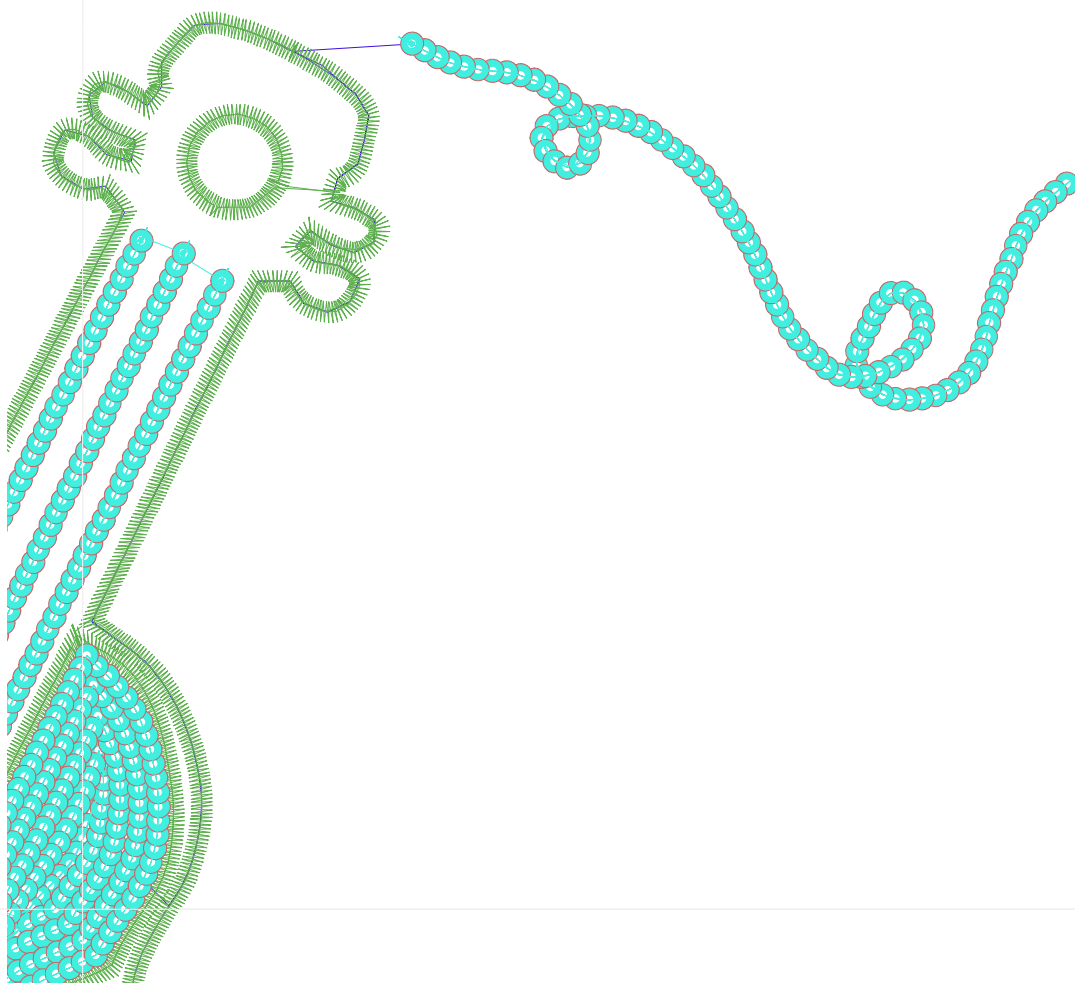
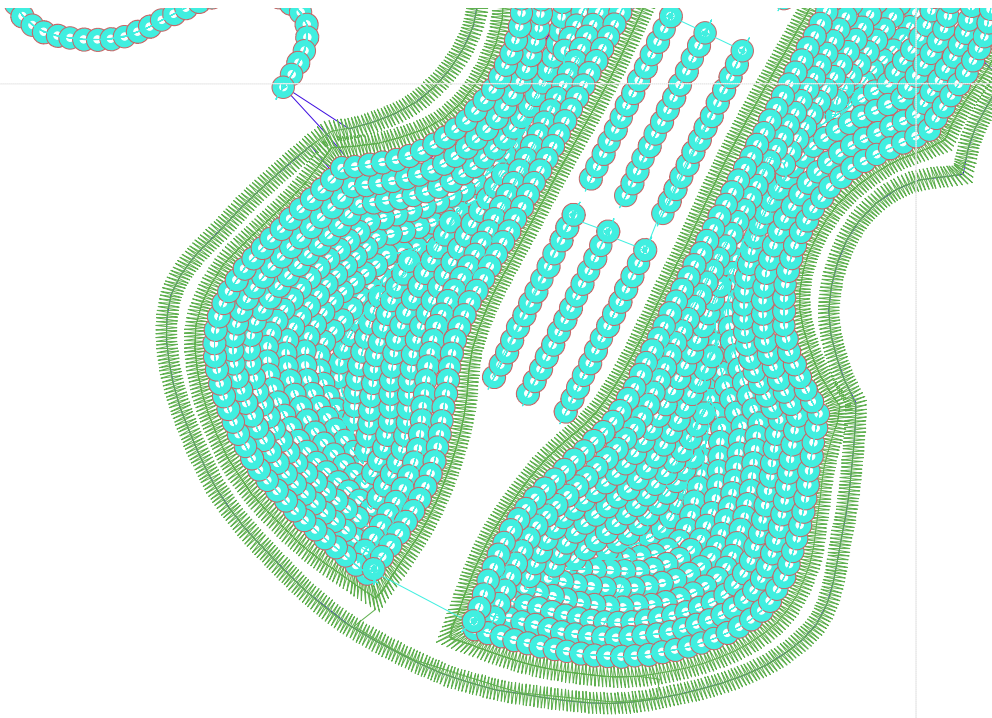


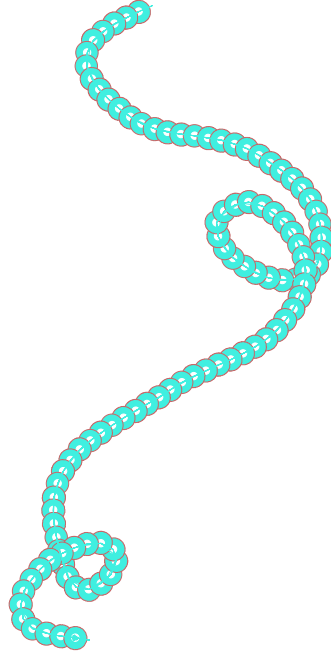
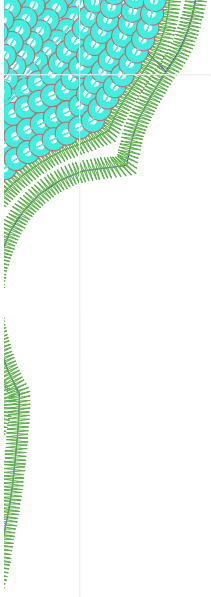


- #1 N1
- #2 S
- #3 N2
- #4 N3
- #4.PA ○○



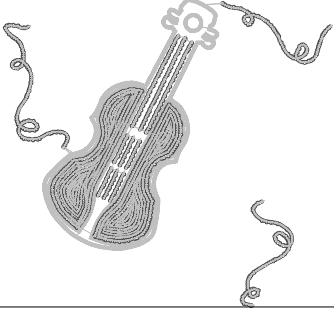
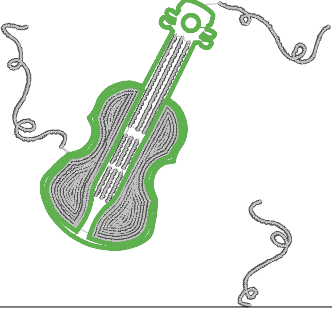
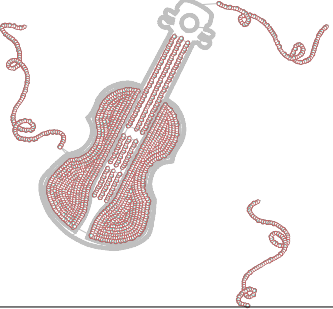









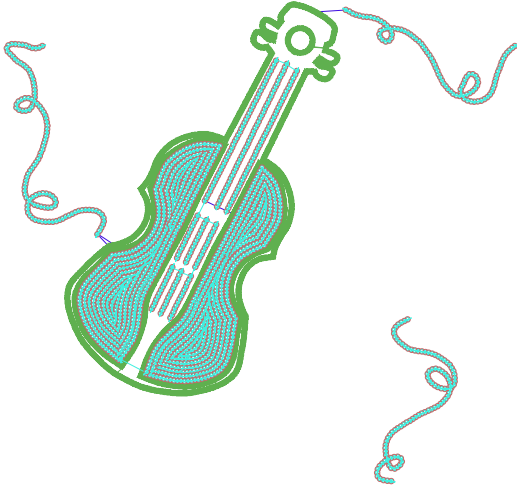


Desen no : 3655.01
Desen Adı : yaka
Müşteri :

Ölçek : 100 %
Boyut : 263,3 x 256,9 mm
Vuruş : 15218

		
<p>#2 Fonksiyon:S İğne:1</p>	<p>#3 Fonksiyon:N2 İğne:2</p>	<p>#4.PA Fonksiyon:PA İğne:3</p>

#2  S, İğne:1, Renk:Ackermann 3110
#3  N2, İğne:2, Renk:Ackermann 5531
#4.PA    PA, İğne:3, Renk:Ackermann 4430 / std-0 3,0 x 3,0



Desen no :3655.01
Desen Adı :yaka
Müşteri :
Vuruş :15218
Adım boyu :127
Boyut :263,3 x 256,9 mm
İğne :3
Stop :1
Çalışma sırası :-s-2-3
Açıklamalar :

Vuruş Dağılımı

Aralık	Vuruş	Dağılım (Yüzde)
0,0 - 2,0 mm	5977	100%
2,0 - 4,0 mm	7340	100%
4,0 - 6,0 mm	26	0%
6,0 - 9,0 mm	7	0%

İğneler_Uzunluklar

Detay No	Fonksiyon	Vuruş	Uzunluk (m)	Renk	İğne Bilgisi
1	Nakışa Başla	974	3,5	Blue	Ackermann 3110
2	İğne 2	6058	28,2	Green	Ackermann 5531
3	İğne 3	6329	13,2	Cyan	Ackermann 4430
4	Toplam uzunluk		44,9		
5	Alt iplik		20,7		

Pul Sayıları

	A
3	1.796