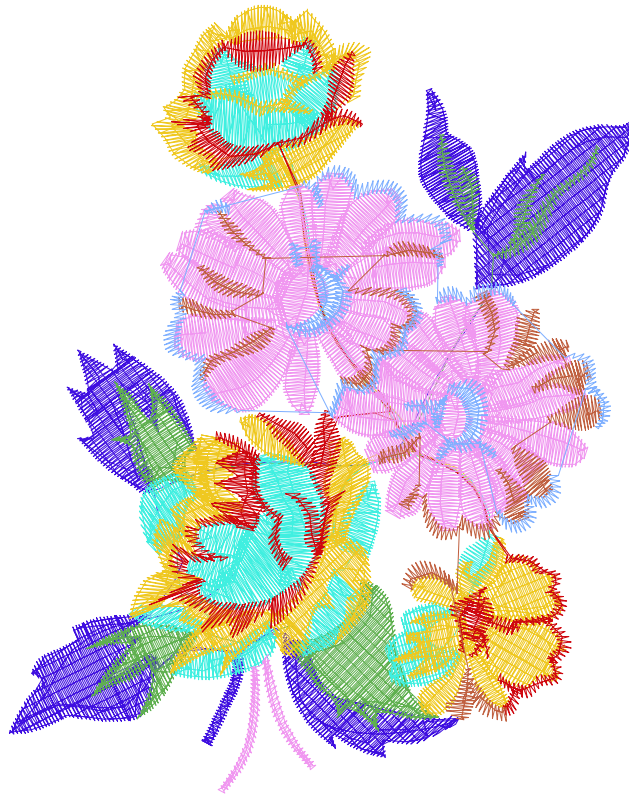












7.10.2022

| | |
|----|----|
| #1 | N1 |
| #2 | N2 |
| #3 | N3 |
| #4 | N4 |
| #5 | N5 |
| #6 | N6 |
| #7 | N7 |
| #8 | N8 |
| #9 | S |



| | | |
|--|--|---|
|  |  |  |
| #1 Fonksiyon:N1 İğne:1 | #2 Fonksiyon:N2 İğne:2 | #3 Fonksiyon:N3 İğne:3 |
|  |  |  |
| #4 Fonksiyon:N4 İğne:4 | #5 Fonksiyon:N5 İğne:5 | #6 Fonksiyon:N6 İğne:6 |
|  |  | |
| #7 Fonksiyon:N7 İğne:7 | #9 Fonksiyon:S İğne:8 | |

| | | | | |
|----|---|-----|---------|---------------------|
| #1 |  | N1, | İğne:1, | Renk:Ackermann 3110 |
| #2 |  | N2, | İğne:2, | Renk:Ackermann 5531 |
| #3 |  | N3, | İğne:3, | Renk:Ackermann 4430 |
| #4 |  | N4, | İğne:4, | Renk:Ackermann 0851 |
| #5 |  | N5, | İğne:5, | Renk:Ackermann 1913 |
| #6 |  | N6, | İğne:6, | Renk:Ackermann 3045 |
| #7 |  | N7, | İğne:7, | Renk:Ackermann 2053 |
| #9 |  | S, | İğne:8, | Renk:Ackermann 3321 |

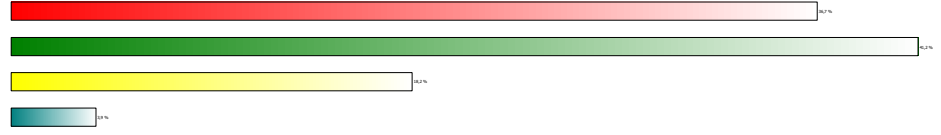


Desen no :4498.00
Desen Adı :KARIŞIK ÇİÇEKLER
Müşteri :
Vuruş :14832
Adım boyu :40
Boyut :82,6 x 104,2 mm
İğne :8
Stop :1
Çalışma sırası :1-2-3-4-5-6-7-8-s
Açıklamalar :

Vuruş Dağılımı

| Aralık | Vuruş |
|--------------|-------|
| 0,0 - 2,0 mm | 4710 |
| 2,0 - 4,0 mm | 5299 |
| 4,0 - 6,0 mm | 2343 |
| 6,0 - 9,0 mm | 495 |

Dağılım (Yüzde)



İğneler_Uzunluklar

| Detay No | Fonksiyon | Vuruş | Uzunluk (m) | Renk | İğne Bilgisi |
|----------|----------------|-------|-------------|------------|----------------|
| 1 | Nakışa Başla | 2097 | 5,9 | Blue | Ackermann 3110 |
| 2 | İğne 2 | 1196 | 2,9 | Green | Ackermann 5531 |
| 3 | İğne 3 | 1565 | 6,1 | Cyan | Ackermann 4430 |
| 4 | İğne 4 | 2452 | 7,1 | Yellow | Ackermann 0851 |
| 5 | İğne 5 | 1169 | 2,8 | Red | Ackermann 1913 |
| 6 | İğne 6 | 2810 | 10,4 | Pink | Ackermann 3045 |
| 7 | İğne 7 | 800 | 1,7 | Brown | Ackermann 2053 |
| 8 | İğne 8 | 813 | 1,4 | Light Blue | Ackermann 3321 |
| 9 | Toplam uzunluk | | 38,4 | | |
| 10 | Alt iplik | | 34,8 | | |