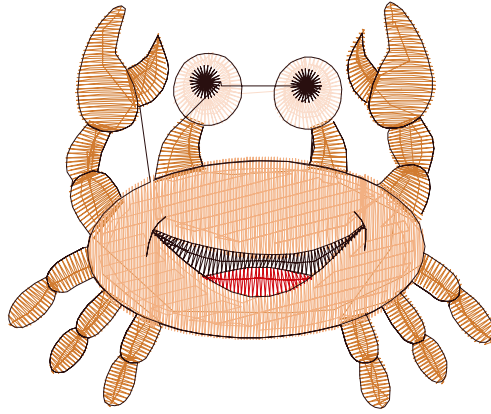
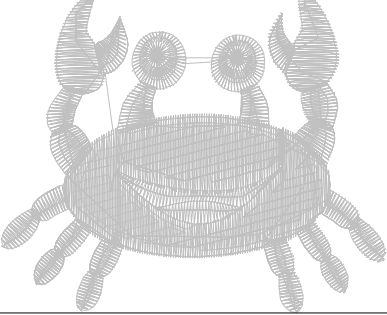
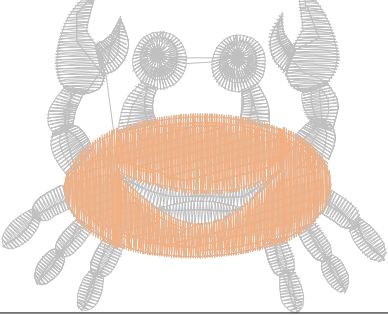
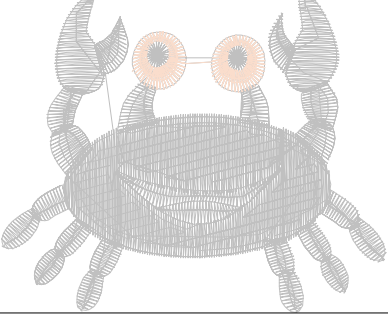
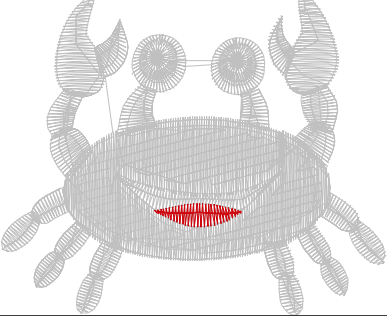
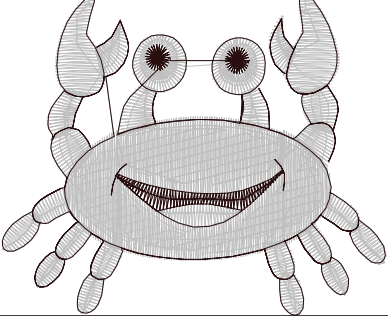
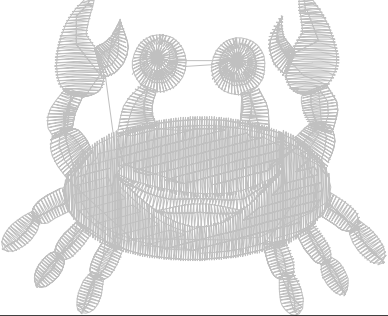










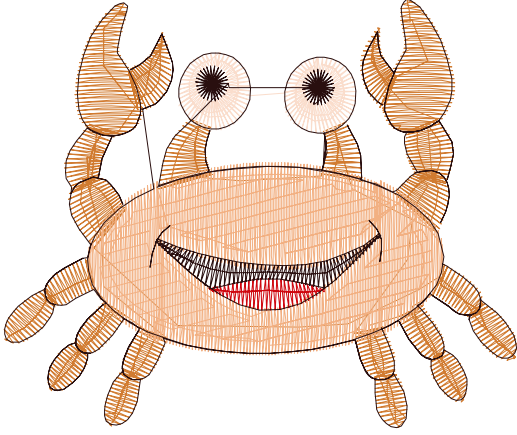
7.10.2022

#1	N1
#2	N2
#3	N3
#4	N4
#5	N5
#6	N1



		
#1 Fonksiyon:N1 İğne:1	#2 Fonksiyon:N2 İğne:2	#3 Fonksiyon:N3 İğne:3
		
#4 Fonksiyon:N4 İğne:4	#5 Fonksiyon:N5 İğne:5	#6 Fonksiyon:N1 İğne:1

- |    |   |     |         |                        |
|----|---|-----|---------|------------------------|
| #1 |  | N1, | İğne:1, | Renk:Angelking 40/22   |
| #2 |  | N2, | İğne:2, | Renk:Angelking 3318/21 |
| #3 |  | N3, | İğne:3, | Renk:Angelking 38/22   |
| #4 |  | N4, | İğne:4, | Renk:Ackermann 1913    |
| #5 |  | N5, | İğne:5, | Renk:Ackermann 1913    |
| #6 |  | N1, | İğne:1, | Renk:Angelking 40/22   |



Desen no :5079.00  
Desen Adı :YENGEÇ  
Müşteri :  
Vuruş :4357  
Adım boyu :40  
Boyut :64,4 x 53,7 mm  
İğne :5  
Stop :0  
Çalışma sırası :1-2-3-4-5-1  
Açıklamalar :

## Vuruş Dağılımı

Aralık	Vuruş	Dağılım (Yüzde)
0,0 - 2,0 mm	1288	
2,0 - 4,0 mm	1988	
4,0 - 6,0 mm	521	
6,0 - 9,0 mm	53	

## İğneler\_Uzunluklar

Detay No	Fonksiyon	Vuruş	Uzunluk (m)	Renk	İğne Bilgisi
1	Nakışa Başla	1212	5,9		Angelking 40/22
2	İğne 2	1420	4,9		Angelking 3318/21
3	İğne 3	253	1,1		Angelking 38/22
4	İğne 4	80	0,3		Ackermann 1913
5	İğne 5	899	2,0		Ackermann 1913
6	Toplam uzunluk		14,2		
7	Alt iplik		7,7		