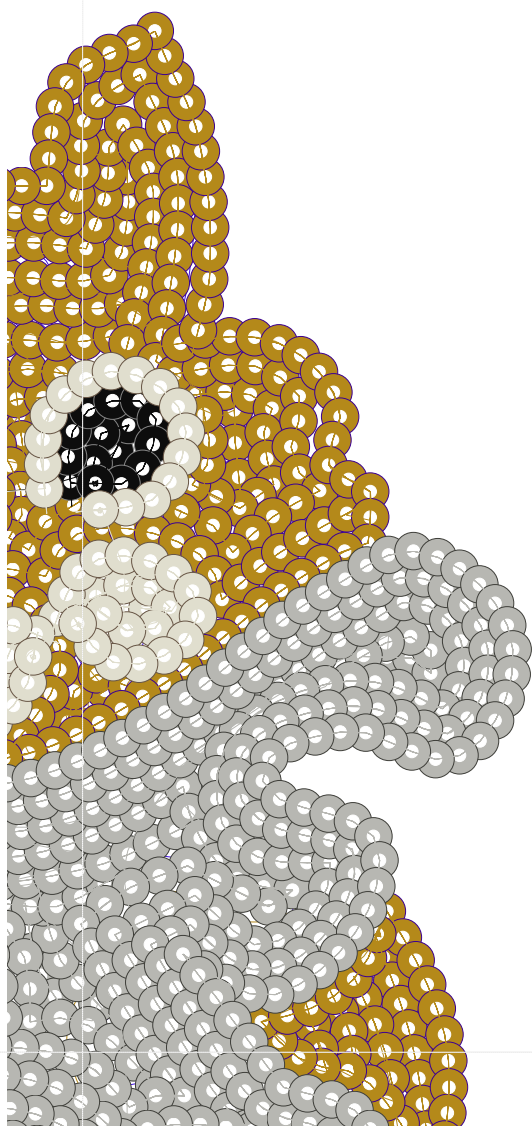
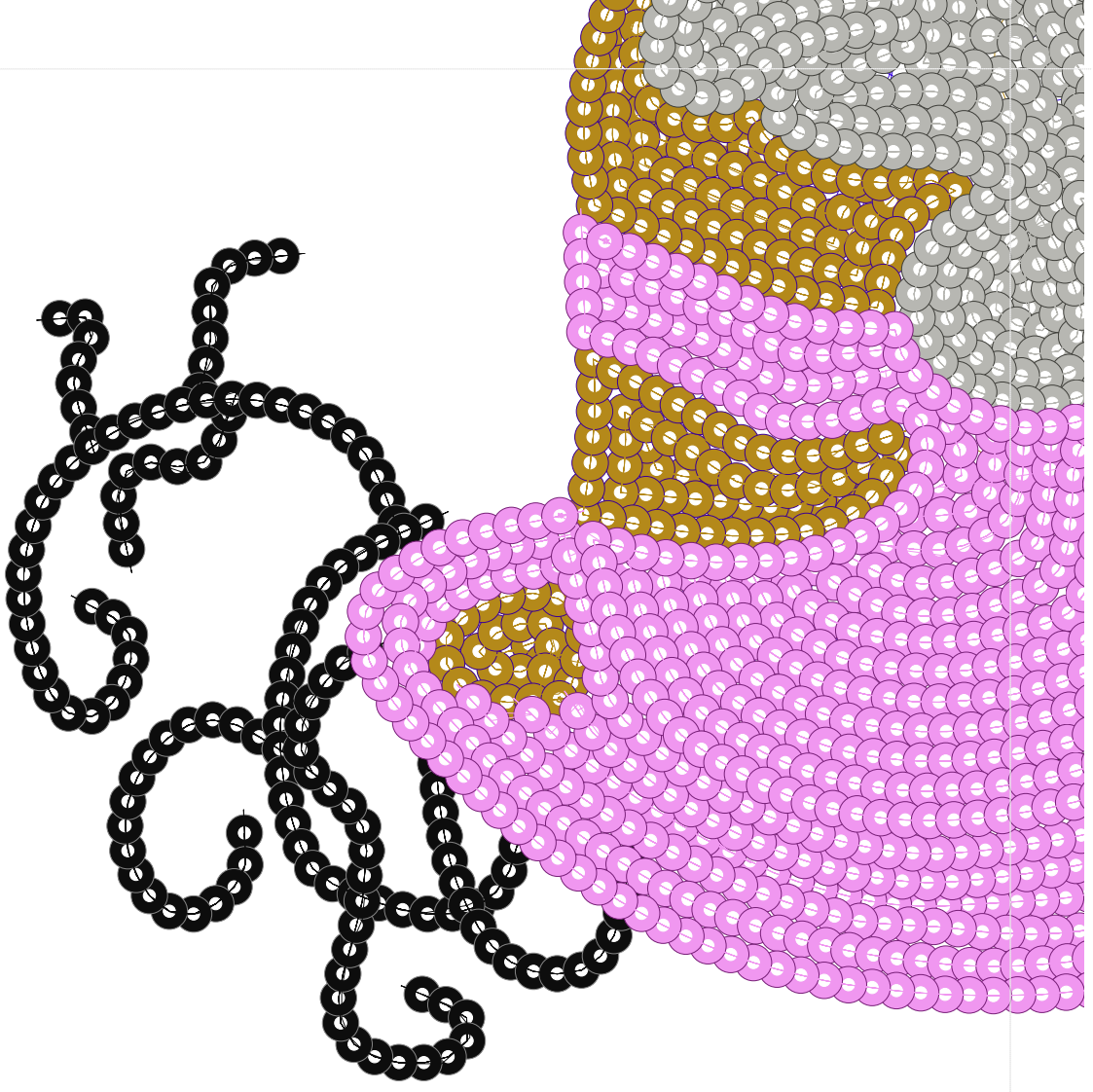


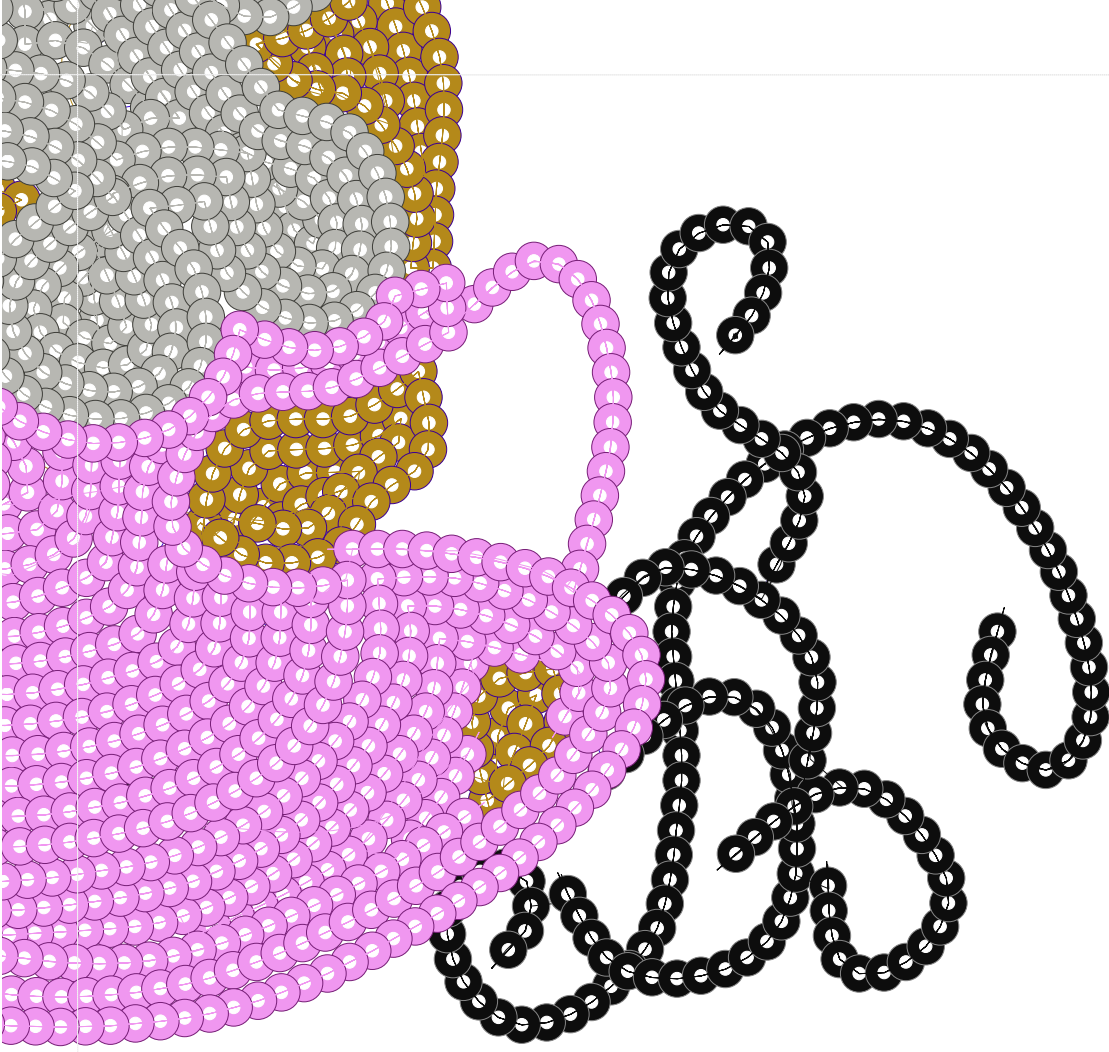


- #1 N1
- #2 N2
- #2.PA N2
- #3
- #3.PA
- #4 N4
- #4.PA
- #5 N5
- #5.PA
- #6 N6
- #6.PA







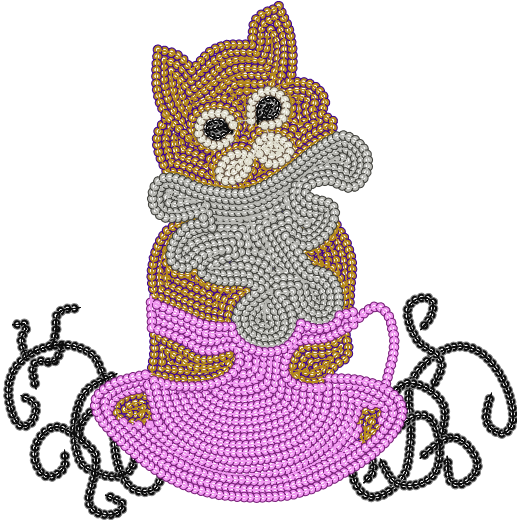


Desen no : 4600.01
Desen Adı : kedi
Müşteri : İPEK TEKSTİL

Ölçek : 100 %
Boyut : 273,1 x 275,1 mm
Vuruş : 14955

#1 Fonksiyon:N1 İğne:1	#2.PA Fonksiyon:PA İğne:2	#3.PA Fonksiyon:PA İğne:3
#4.PA Fonksiyon:PA İğne:4	#5.PA Fonksiyon:PA İğne:5	#6.PA Fonksiyon:PA İğne:6

- | | | | | |
|-------|--|-----|---------|---------------------------------------|
| #1 | | N1, | İğne:1, | Renk:Ackermann 3110 |
| #2.PA | | PA, | İğne:2, | Renk:Ackermann 5531 / std-2 5,0 x 5,0 |
| #3.PA | | PA, | İğne:3, | Renk:Ackermann 4430 / std-2 5,0 x 5,0 |
| #4.PA | | PA, | İğne:4, | Renk:Ackermann 0851 / std-2 5,0 x 5,0 |
| #5.PA | | PA, | İğne:5, | Renk:Ackermann 1913 / std-2 5,0 x 5,0 |
| #6.PA | | PA, | İğne:6, | Renk:Ackermann 3045 / std-2 5,0 x 5,0 |



Desen no :4600.01
Desen Adı :kedi
Müşteri :
Vuruş :14955
Adım boyu :127
Boyut :273,1 x 275,1 mm
İğne :6
Stop :0
Çalışma sırası :1-2-3-4-5-6
Açıklamalar :

Vuruş Dağılımı

Aralık	Vuruş	Dağılım (Yüzde)
0,0 - 2,0 mm	728	
2,0 - 4,0 mm	11534	
4,0 - 6,0 mm	194	
6,0 - 9,0 mm	7	

İğneler_Uzunluklar

Detay No	Fonksiyon	Vuruş	Uzunluk (m)	Renk	İğne Bilgisi
1	Nakışa Başla	1996	5,0		Ackermann 3110
2	İğne 2	3088	10,4		Ackermann 5531
3	İğne 3	1508	5,2		Ackermann 4430
4	İğne 4	361	1,2		Ackermann 0851
5	İğne 5	2435	8,1		Ackermann 1913
6	İğne 6	3081	10,4		Ackermann 3045
7	Toplam uzunluk		40,3		
8	Alt iplik		36,5		

Pul Sayıları

	A
2	693
3	342
4	76
5	592
6	760
Toplam	2.463

2.463